

Titanium	Nitinol
Stainless steel	Inconel
Mild steel	Cobalt chrome
Aluminium	Bulk metallic glass
Magnesium	and more

Standard CoBlast process parameters can be applied to many substrate materials and ENBIO can also provide parameters optimised for specific substrates. CoBlast Skins integrate exceptionally well even with substrates that normally suffer poor coating adhesion, thanks to the simultaneous roughening, chemical activation, and coating deposition.

CoBlast is an ambient temperature, ambient pressure process that can be applied to sensitive substrates without damage. Heat treated alloys can be coated without destroying the properties achieved during the heat treatment process.

Difficult substrates such as magnesium, nitinol, and Inconel can be coated with the standard process.

There is no oxide layer between the coating and the metal.

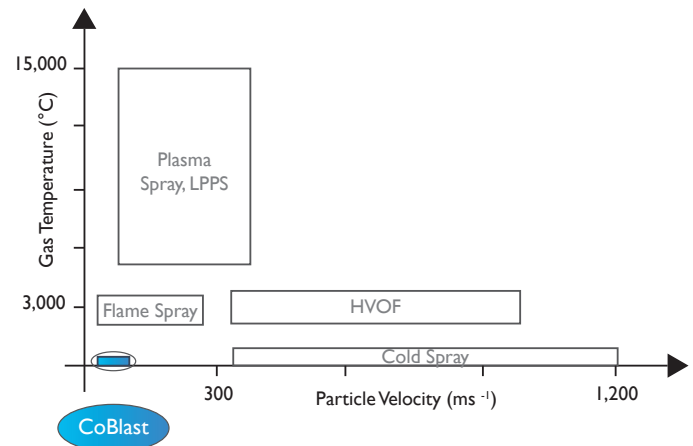
Coated nitinol parts have shown no loss of superelasticity or shape memory.

Titanium can be coated with no evidence of oxygen infiltration or α -case formation.

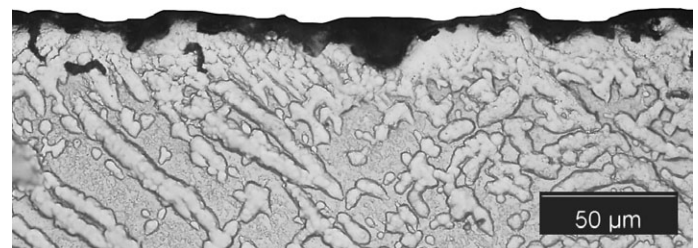
No heat affected zone is observed after CoBlast.

Complex heat treatments of alloys such as aerospace aluminium grades are preserved.

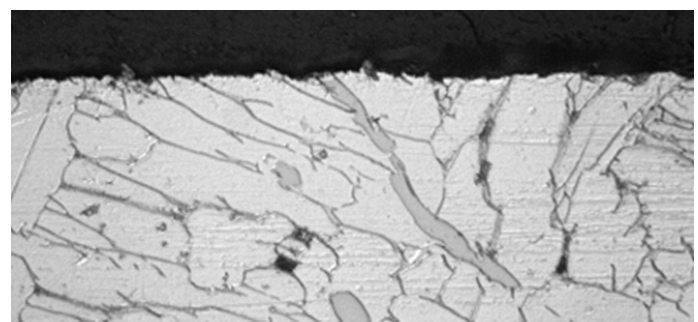
The range of substrates is constantly expanding to include new materials and new grades, for example: titanium (G2, G5), aluminium (2000 and 6000 series) and stainless steel (304, 316). Please contact us with any queries relating to specific substrates.



	SolarBlack	Solar-White	HA	Zinc Phosphate	PTFE
Ti	○	○	○		○
SS	○		○	○	○
MS	○			○	○
Al	○	○		○	○
Mg	○		○	○	
Nitinol	○		○		○
Inconel	○				
CoCr			○		



SolarBlack coating on magnesium plate



Titanium grain structure maintained after CoBlast

ENBIO, NovaUCD, Belfield Innovation Park, University College Dublin, Belfield, Dublin 4, Ireland.

Tel: +353 (0)1 525 3305 • Fax: +353 (0)1 525 3309
 info@enbio.eu • www.enbio.eu